



FRONT ELEVATION

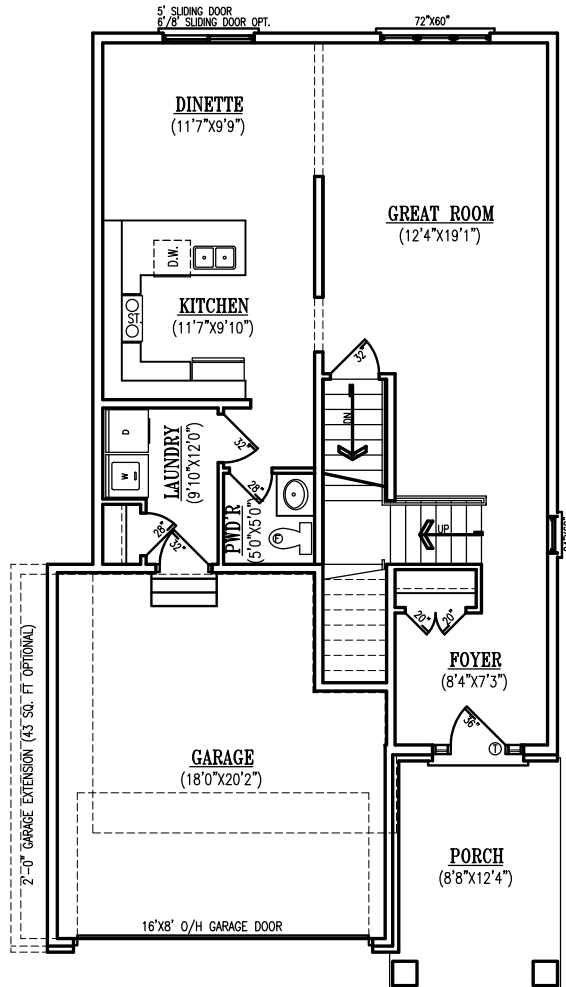


FRONT ELEVATION-UPGRADED BRICK OPT.

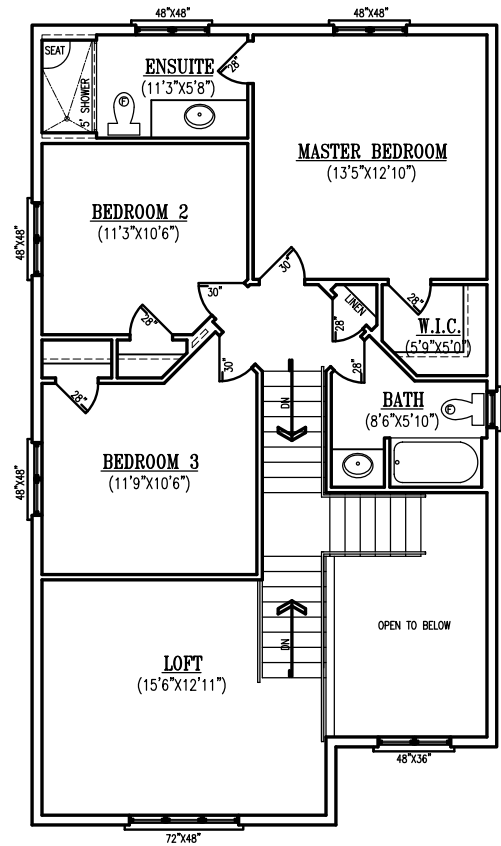
OVERALL SIZE - 28'-0" X 50'-5"

The BRUNSWICK - 3 BEDROOM

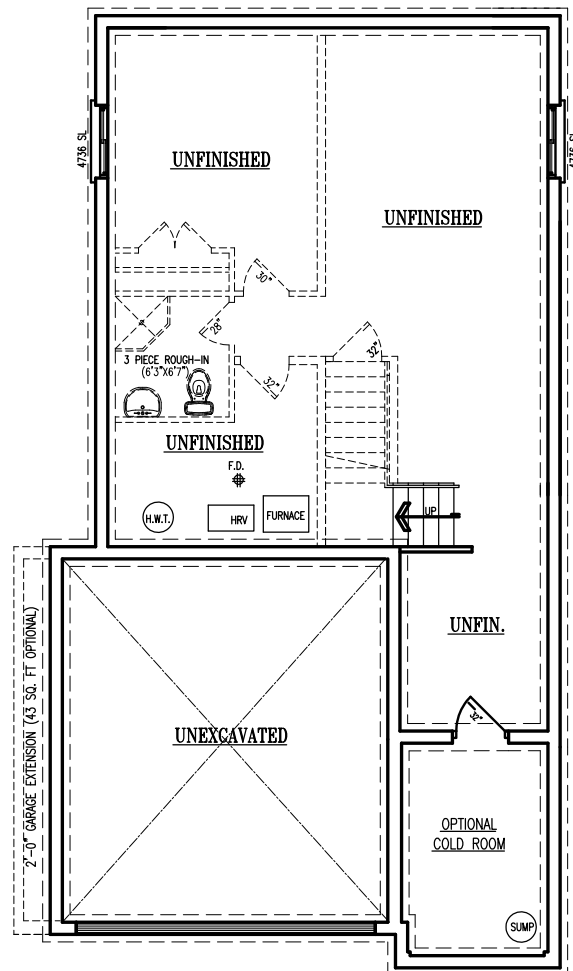
TOTAL SQ.FT. = 1868 SQ.FT. (173.54 SQ.M.)



**MAIN FLOOR PLAN**  
878 SQ. FT. (1868 SQ. FT. TOTAL)  
81.56 SQ.M. (173.54 SQ.M. TOTAL)



**UPPER FLOOR PLAN**  
990 SQ. FT. (PLUS 96 SQ. FT. OPEN)  
91.97 SQ.M. (PLUS 8.91 SQ.M. OPEN)



FOUNDATION PLAN

OVERALL SIZE - 28'-0" X 50'-5"

The BRUNSWICK - 3 BEDROOM

TOTAL SQ.FT. = 1868 SQ.FT. (173.54 SQ.M.)