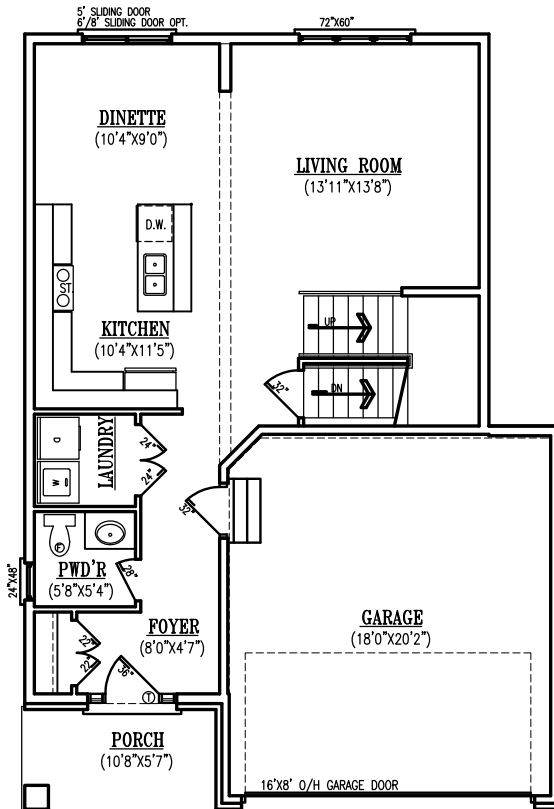




FRONT ELEVATION

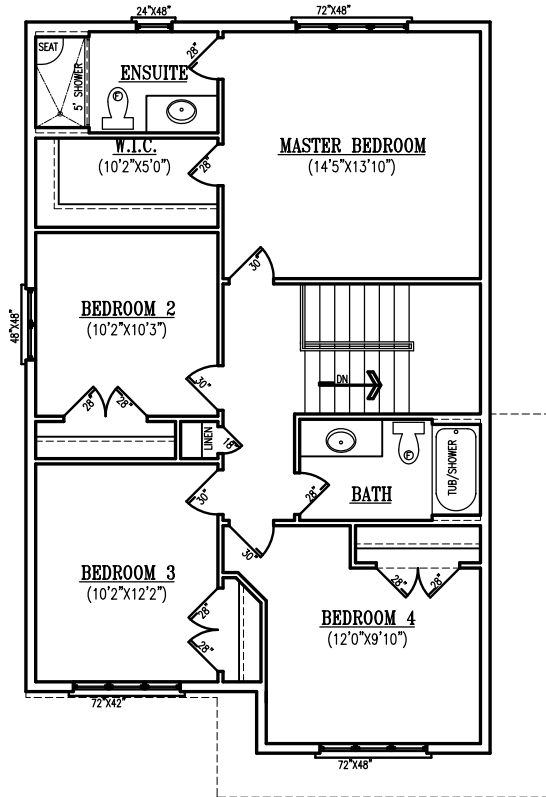


FRONT ELEVATION-UPGRADED BRICK OPT.



### MAIN FLOOR PLAN

761 SQ. FT. (1781 SQ. FT. TOTAL)  
**70.69 SQ.M. (165.46 SQ.M. TOTAL)**



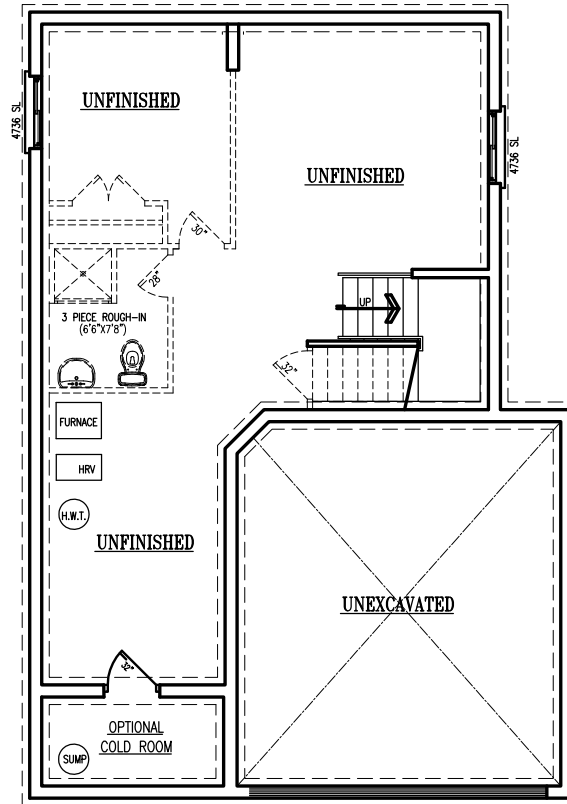
### UPPER FLOOR PLAN

1020 SQ. FT.  
**94.78 SQ.M.**

OVERALL SIZE - 30'-0" X 43'-5"

The ELM

TOTAL SQ.FT. = 1781 SQ.FT. (165.46 SQ.M.)



FOUNDATION PLAN

OVERALL SIZE - 30'-0" X 43'-5"

The ELM

TOTAL SQ.FT. = 1781 SQ.FT. (165.46 SQ.M.)