



FRONT ELEVATION

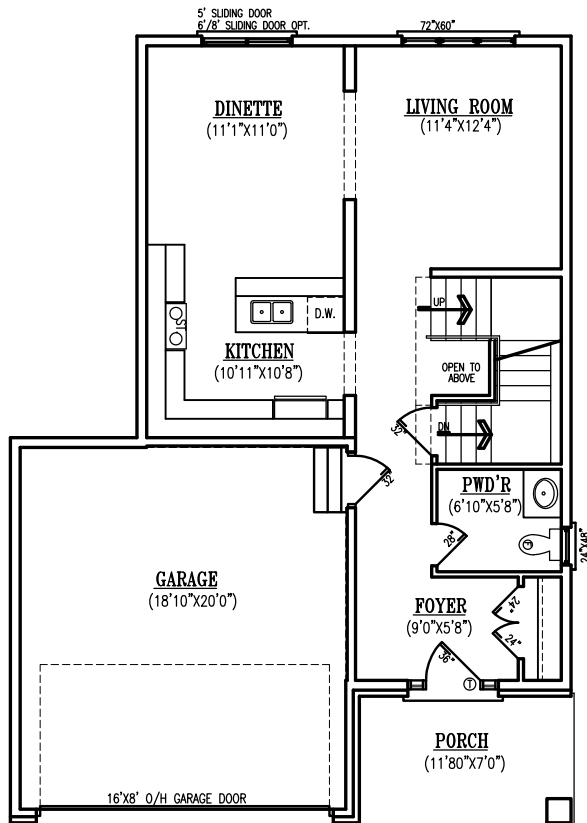


FRONT ELEVATION-UPGRADED BRICK OPT.

OVERALL SIZE - 31'-0" X 43'-6"

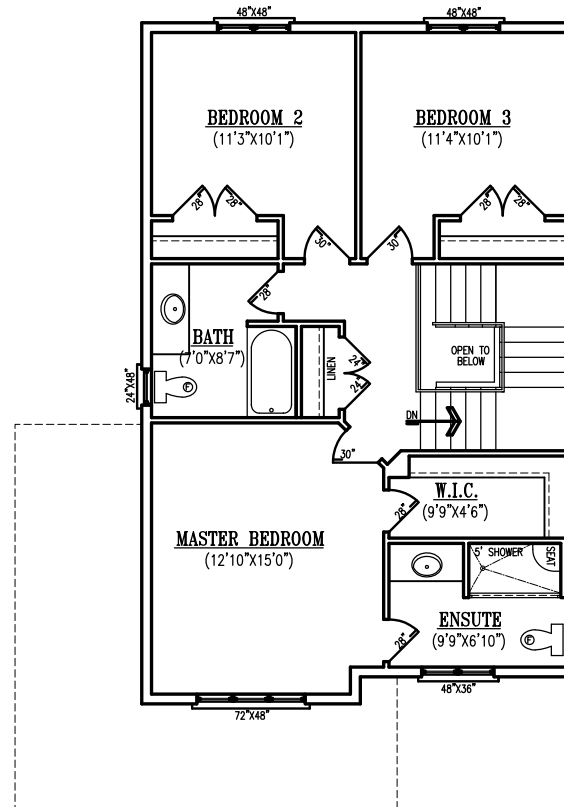
The IVY

TOTAL SQ.FT. = 1586 SQ.FT. (147.34 SQ.M.)



MAIN FLOOR PLAN

716 SQ. FT. (1586 SQ. FT. TOTAL)
66.51 SQ.M. (147.34 SQ.M. TOTAL)



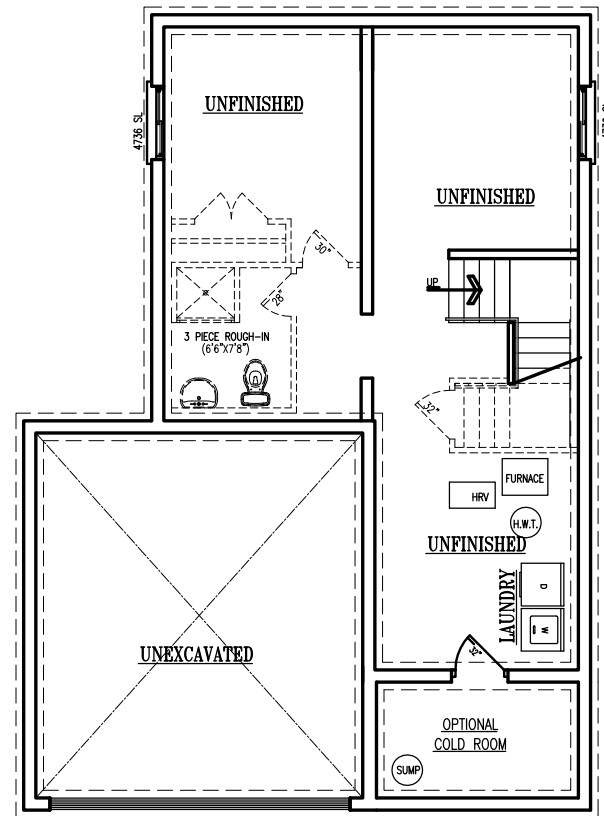
UPPER FLOOR PLAN

870 SQ. FT. (PLUS 17 SQ. FT. OPEN)
80.82 SQ.M. (PLUS 1.57 SQ.M. OPEN)

OVERALL SIZE - 31'-0" X 43'-6"

The IVY

TOTAL SQ.FT. = 1586 SQ.FT. (147.34 SQ.M.)



FOUNDATION PLAN

OVERALL SIZE - 31'-0" X 43'-6"

The IVY

TOTAL SQ.FT. = 1586 SQ.FT. (147.34 SQ.M.)